



DA||GLASS



**Thermally Tempered,  
Laminated and  
Double Glazed Glass**

**Over 30 years  
of experience in  
craftsmanship of  
highly advanced  
glass technology**

# DAGLASS PORTFOLIO

DAGLASS

## TECHNOLOGIES & PRODUCTS



### **THERMALLY TEMPERED, LAMINATED AND DOUBLE GLAZED GLASS**

A wide range of applications in the construction industry.



### **DIFFUSED GLASS**

It scatters the light in a controlled and steady manner. Therefore, it removes shadows and gives more transparency in contact with water. It is a perfect solution for lightning and greenhouse sector.



### **NANO-BARRENTM ANTISEPTIC GLASS**

It is produced with the use of magnetron technology and has antifungal, self-cleaning and biostatic properties.



### **DIAMOND GLASS**

Hydrophobic, resistant to scratching. It is a great choice for partitions, partition walls, and shower cabinets.



### **ANTI-REFLECTIVE GLASS**

By changing the surface morphology, this glass increases the light transmittance. Consequently, it improves the efficiency of lightning and significantly advances the quality of image on screens.



### **NON-GLARE GLASS**

A type of glass with changed morphology in the nano scale. It is suitable for LED screens and LCD screens. The anti-finger print feature makes it an ideal solution for touch screens. It reduces light reflexes and improves the image.





**DAGLASS (ESG) thermally tempered glass is produced with a special thermal treatment.** This process is based on heating the glass to a high temperature, holding it until the internal structure of the glass changes, and then cooling it quickly. As a result, the glass resistance to bending and mechanical damage increases significantly. As thermally tempered glass is safe, it generates minimal risk to humans. In case of damage, glass breaks into a lot of small, blurred pieces. DAGLASS has its own hardening furnace.

**DAGLASS (VSG) laminated glass is another type of safety glass, that is layered with the foil between the panes of glass.** The foil absorbs the impact energy, ensures stability in case of breaks and prevents the glass from falling out of the structure. Laminated glass is durable, retains its color and resistance. DAGLASS offers laminates of float and low-iron glass. We recommend the use of thermally tempered (ESG) or thermally strengthened (TVG) glass.

**DAGLASS double glazed glass consists of 2, 3 or 4 glass panes, separated by a spacer, and at the same time permanently connected with each other with a sealing.** We offer a single-chamber or multi-chamber glazing with the use of anti-reflective, antibacterial, diffused, diamond glass, body-tinted glass, painted with ceramic paints, chemically etched or heating glass.

# CHARACTERISTICS

## LAMINATED, THERMALLY TEMPERED GLASS ESG VSG

- As a result of hardening process, glass obtains 5-7 times higher mechanical strength than the standard one
- A range of glass resistance to temperature shocks increases and amounts to 200-300 °C
- The bending strength reaches 120 N (Newtons) / mm<sup>2</sup> and compressive strength 700-900 N / mm<sup>2</sup>
- In case of damage, it breaks into small pieces without sharp edges, reducing the risk of injury
- Increased mechanical strength while maintaining transparency and shape after breaking.
- Meets European safety glass standards and is recognized all over the world as the safest type of glass.
- All glass processing, e.g. making holes, cutting shapes are possible only before hardening.
- A foil ensures stability - no falling off glass fragments in case of breakage
- Glass panes can be connected with "frozen" foil, as a result you cannot see what is on the other side (translucency at the level of nearly 60%)



# CHARACTERISTICS

## DOUBLE GLAZED GLASS

- Characterized by higher thermal parameters that provide both energy efficiency and acoustic comfort by reducing noise.
- The use of VSG laminated glass ensures thermal insulation and higher safety.
- Body tinted glass provides additional protection against solar radiation.
- We can offer double glazed glass with ornamental, painted or decorative glass.



# TECHNICAL DATA

## ESG

<b>Max. dimensions</b>	2900 x 1900
<b>Max. weight</b>	depends on the thickness of the glass, e.g. 165 kg for 12 mm glass
<b>Available glass thicknesses</b>	4 mm, 5 mm, 6 mm, 8 mm, 10 mm, 12 mm
<b>Hardening temperature</b>	680-735°C

## VSG ESG Glass


<b>Max. dimensions</b>	1500 x 1600
<b>Max. weight</b>	depends on the thickness of the glass
<b>PVB</b>	colorless/matt/colored foils
<b>Glass thickness range</b>	2x2 mm*, 3x3 mm, 4x4 mm, 5x5 mm, 6x6 mm, 8x8 mm, 10x10 mm

\* VSG Glass

## Double Glazed Glass

<b>Max. dimensions</b>	from 2 m <sup>2</sup> for 4 mm panes to even 8 m <sup>2</sup> for 8 mm panes
<b>Frames range:</b>	6, 8, 10, 12, 14, 16, 18 mm, warm frames available



The background of the slide is a photograph of a modern architectural structure, likely a glass and steel canopy or walkway. The structure features a series of parallel steel beams supporting a glass roof. The entire image is overlaid with a semi-transparent blue filter. On the left side, there are three vertical white lines of varying heights, resembling a stylized 'H' or a list marker.

# **Thermally Tempered, Laminated & Double Glazed Glass applications**



## **THERMALLY TEMPERED, LAMINATED & DOUBLE GLAZED GLASS**

DAGLASS safety glass ESG, VSG provides protection and safety for its users. It can be used wherever higher resistance to damage is required. Therefore, DAGLASS thermally tempered, laminated glass can be arranged for many sectors of the economy, including in housing, industrial and public utility construction. Furthermore, more popular use of different types of displays requires using ESG or VSG ESG glass as a transparent and durable protective material.

A wide portfolio of double glazed glass makes it an excellent choice for different architecture applications. The most common method of constructing curtain walls in tall buildings are mullion-transom facades with insulating glass. It gives the building high thermal insulation parameters and a modern architectural form.



**CONSTRUCTION  
INDUSTRY**



**PUBLIC PLACES**



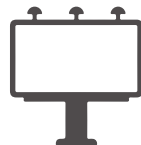
**INTERIOR  
ARCHITECTURE**



**EDUCATIONAL INSTITUTIONS  
AND MUSEUMS**



**AUTO & AVIATION  
INDUSTRY**



**MULTIMEDIA  
ADVERTISING SPACES**



**COMMERCIAL  
SPACES**



**BANKING  
SECTOR**





## APPLICATIONS

- Building facades
- Glass canopies
- Winter gardens
- Glass terraces
- Balustrades and glass railings
- Bus shelters



**BUILDING FACADES**



**GLASS CANOPIES**



**WINTER GARDENS**



**GARDEN CENTERS**



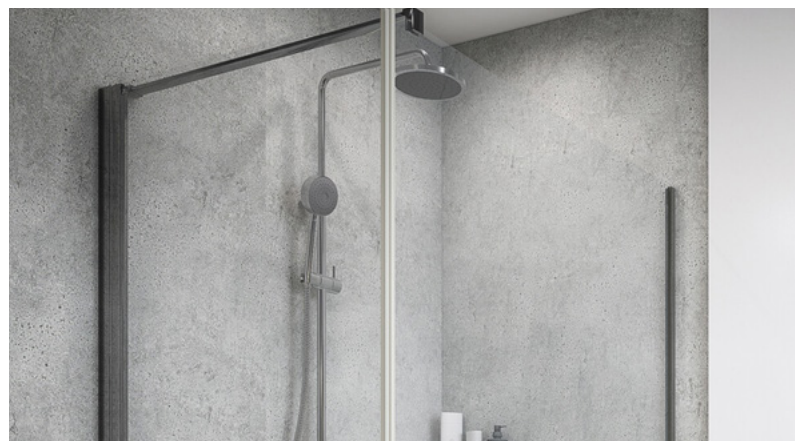


## APPLICATIONS

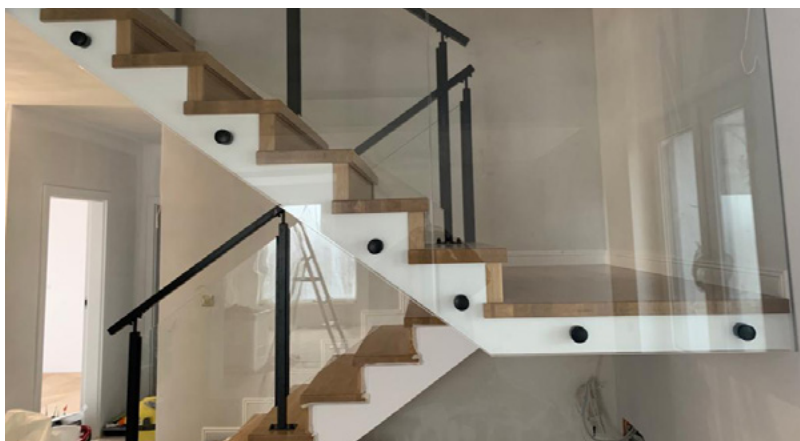
- Glass partitions
- Glass interior design
- Glass doors
- Sliding wardrobes
- Shower cabins
- Shelves, countertops, showcases
- Glass stairs & floors
- Household appliances



**SLIDING WARDROBES**



**SHOWER CABINS**



**GLASS STAIRS & FLOORS**

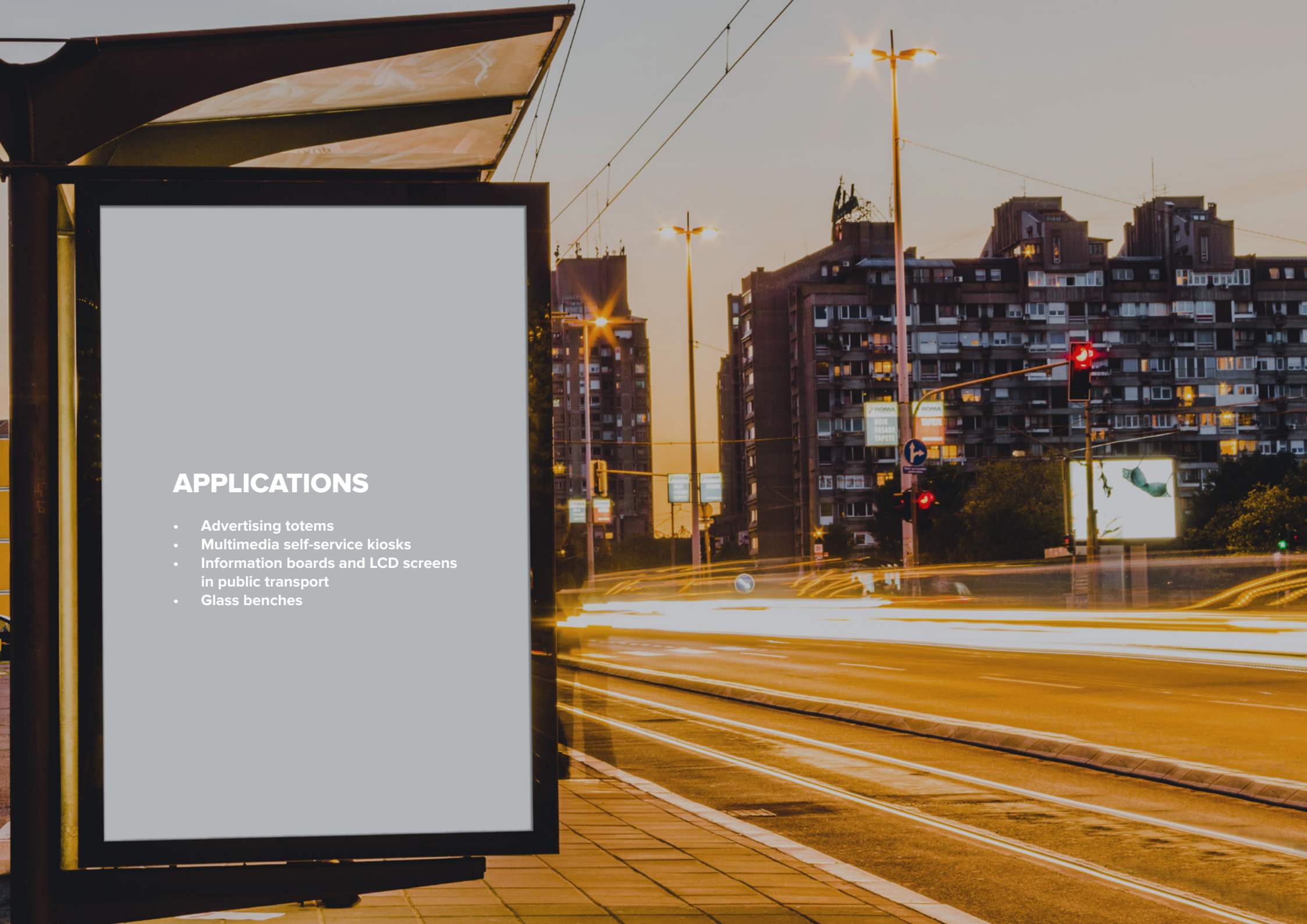


**HOUSEHOLD APPLIANCES**



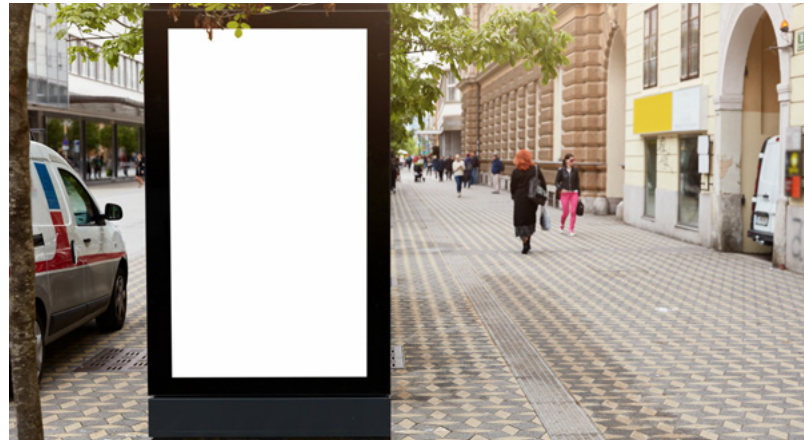
## APPLICATIONS

- Advertising totems
- Multimedia self-service kiosks
- Information boards and LCD screens in public transport
- Glass benches





**ADVERTISING TOTEMS**



**MULTIMEDIA SELF-SERVICE KIOSKS**



**LCD SCREENS**



**GLASS BENCHES**

# Contact

**DAGLASS Sp. z o.o.**

Innowacyjna 15 St.

36-060 Głogów Małopolski

**[info@daglass.pl](mailto:info@daglass.pl)**

**[sprzedaz@daglass.pl](mailto:sprzedaz@daglass.pl)**

**[www.daglass.pl](http://www.daglass.pl)**

Reception

**+48 17 744 93 30**

Sales department

**+48 17 744 93 45**

